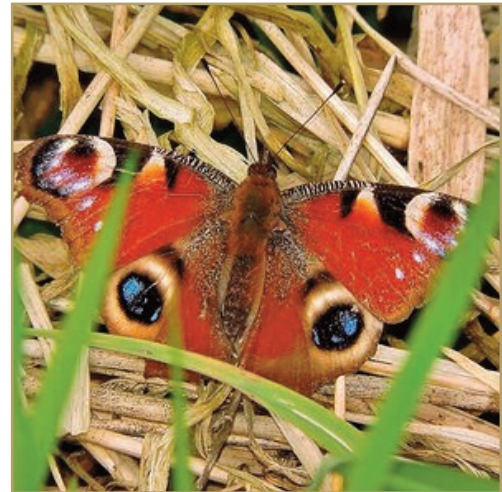


Leeds Castle "I Spy" Wildlife Trail

There are many butterflies and moths to be found in the grounds of Leeds Castle in the summer, especially in the Culpeper Garden. See how many you spot today.



Comma Butterfly



A Peacock Butterfly



Green-veined White Butterfly



Red Admiral



Painted Lady



Large White Butterfly



Leeds Castle “I Spy” Wildlife Trail

There are many butterflies and moths to be found in the grounds of Leeds Castle in the summer, especially in the Culpeper Garden. See how many you spot today.



Small White butterfly



Hawk Moth



Tortoiseshell Butterfly



Large Skipper

Some fun butterfly facts...

- Butterflies top flight speed is 12 miles per hour!
- Some moths can fly up to 25 miles per hour!
- Butterflies cannot fly if they are too cold!
- A butterfly can be as small as an 1/8 of an inch
- Or as big as 12 inches!
- Butterflies can see 3 colours...red, green and yellow.

